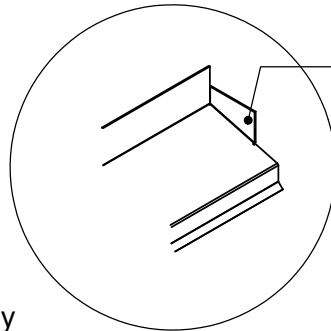


Notes:

- All nail fixings pre-drilled minimum 1mm diameter smaller than nail gauge
- All products to be pre-coated & cut edges to be sealed as per Branz Bulletin 411
- All materials and fixtures are to comply with E2/AS1 clause 2.2
- Provide PVC tape bond break between H3.2 battens and any flashing
- Vertical Shiplap profiles to be fixed with a minimum 2mm gap at the overlap between boards
- Rigid & Flexible underlay as per table 23 and clauses 9.1.5 to 9.1.7
- Timber to NZBC B2 durability B2.3.1 (b), Western Red Cedar, Larch



Head flashing turned up to form stop end. 50mm long
Ensure stop ends to be installed in accordance with NZBC E2/AS1 9.1.10.4.d)

6mm Fibre cement Rigid Wall Underlay
As per table 23 and clauses 9.1.5 to 9.1.7 and 9.1.7.2 E2/AS1

Gib Board

BBS Vertical Shiplap Weatherboard

CCA treated H3.2 45x20mm
BBS "H" timber cavity batten.
Horizontal @480mm max centres

Flashing tape over head flashing
with PBS Butyl tape

75mm annular grooved rose head nail,
silicone bronze or Stainless steel

PBS cavity closer with vent slots

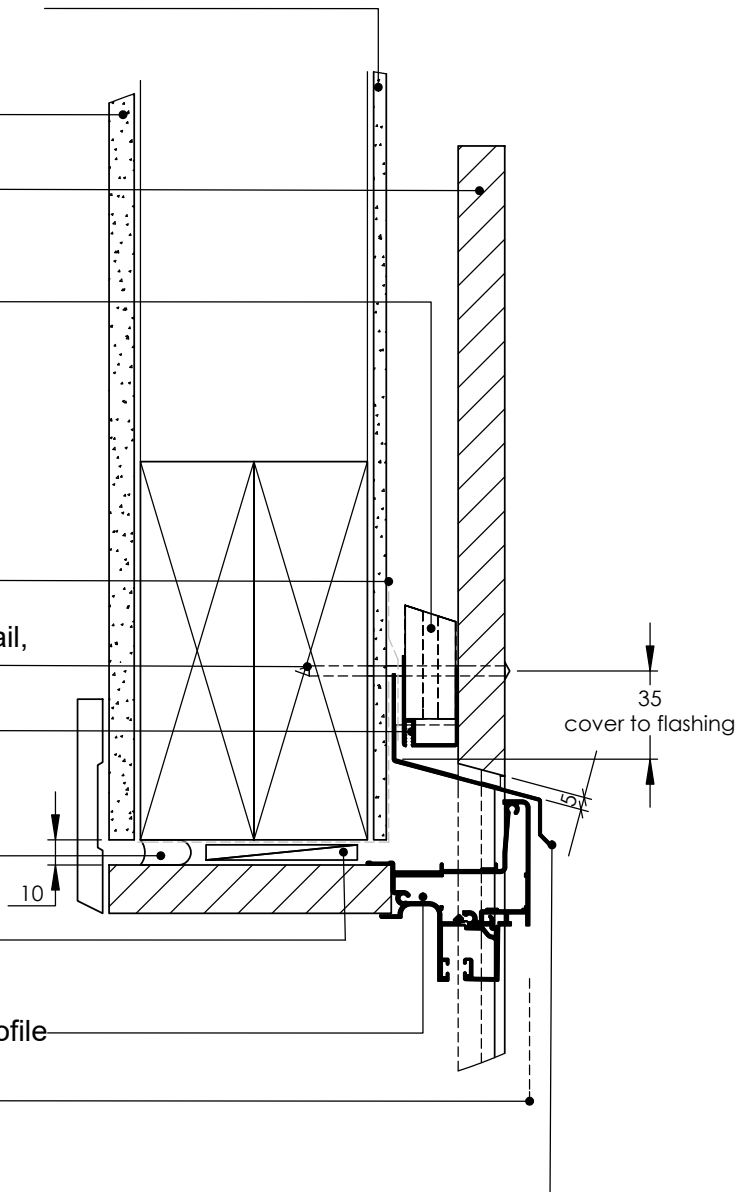
Continuous air seal to perimeter of
opening

Packer

P/C aluminium joinery. Indicative profile

Line of jamb scriber

Proprietary pre-folded head flashing
with 15° fall



TITLE:					copyright BBS Timbers LTD ©		Aluminium Head Detail	
	NAME	SIGNATURE	DATE	Rev		DWG NO.	A4	
DRAWN						27 Kioreroa road PO Box 1407 Whangarei 09 438 9358	VC-RB-30-H	
CHK'D								
APP'VD								
						SCALE:1:10 DNS	SHEET 1 OF 1	