

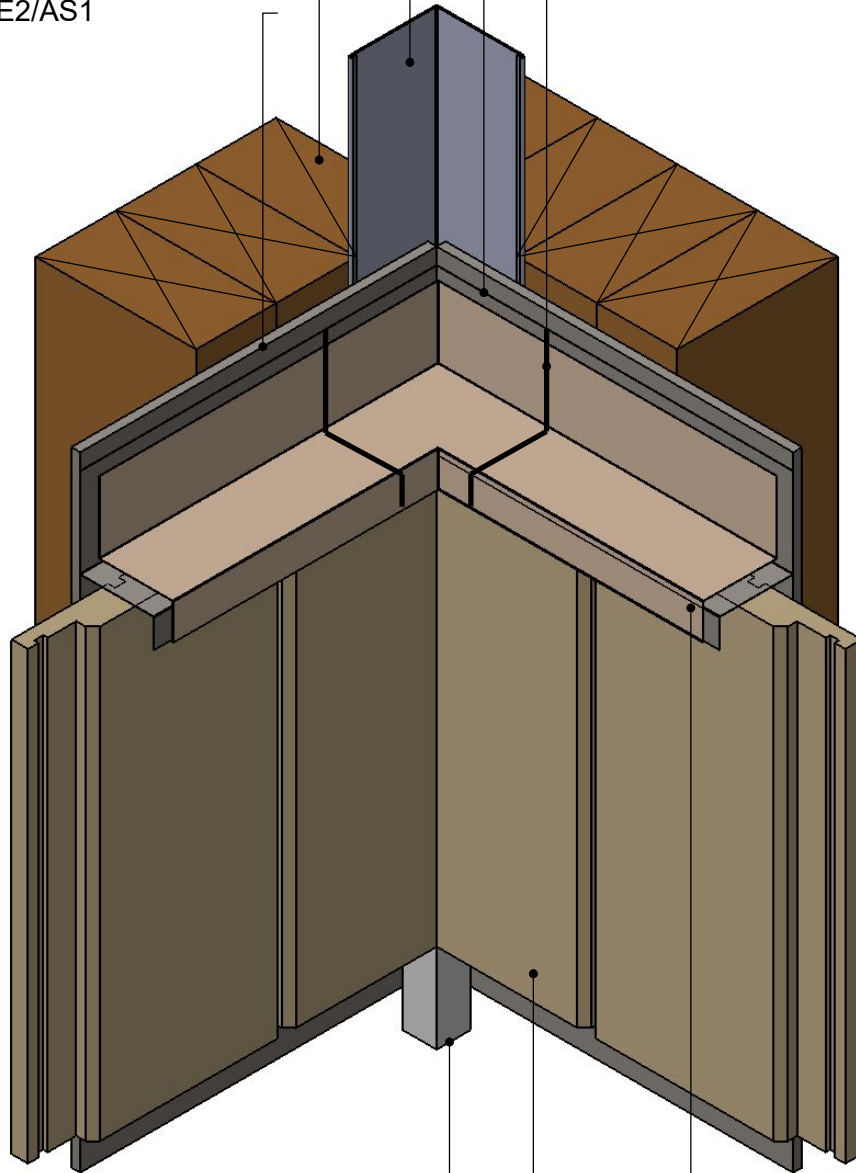
Minimum 50x50 internal flashing  
hem folds compatibility to comply  
with NZBC E2/AS1

Framing

6mm Fibre cement Rigid Wall Underlay  
As per table 23 and clauses 9.1.5 to  
9.1.7 and 9.1.7.2 E2/AS1

150x150 under flashing

Continuous bead of  
flexible sealant



BBS41 19x19mm  
internal timber corner  
mould

BBS Vertical Shiplap Weatherboard

Horizontal Z flashing over corner  
flashing

TITLE:					copyright BBS Timbers LTD ©		Internal Corner Detail	
	NAME	SIGNATURE	DATE	Rev	 27 Kioreroa road PO Box 1407 Whangarei 09 438 9358	DWG NO.	A4	
DRAWN						VC-RB-16		
CHK'D								
APP'VD						SCALE:1:10 DNS	SHEET 1 OF 1	