

Notes:

- All nail fixings pre-drilled minimum 1mm diameter smaller than nail gauge
- All products to be pre-coated & cut edges to be sealed as per Branz Bulletin 411
- All materials and fixtures are to comply with E2/AS1 clause 2.2
- Provide PVC tape bond break between H3.2 battens and any flashing
- Rigid & Flexible underlay as per table 23 and clauses 9.1.5 to 9.1.7
- Timber to NZBC B2 durability b2.3.1 (b), Western Red Cedar, Larch

BBS41 (19X19mm)
internal timber corner moulding

9x9 compressible foam strip

Minimum 50x50mm internal flashing hem
edge folds compatibility to comply with
NZBC E2/AS1

Framing

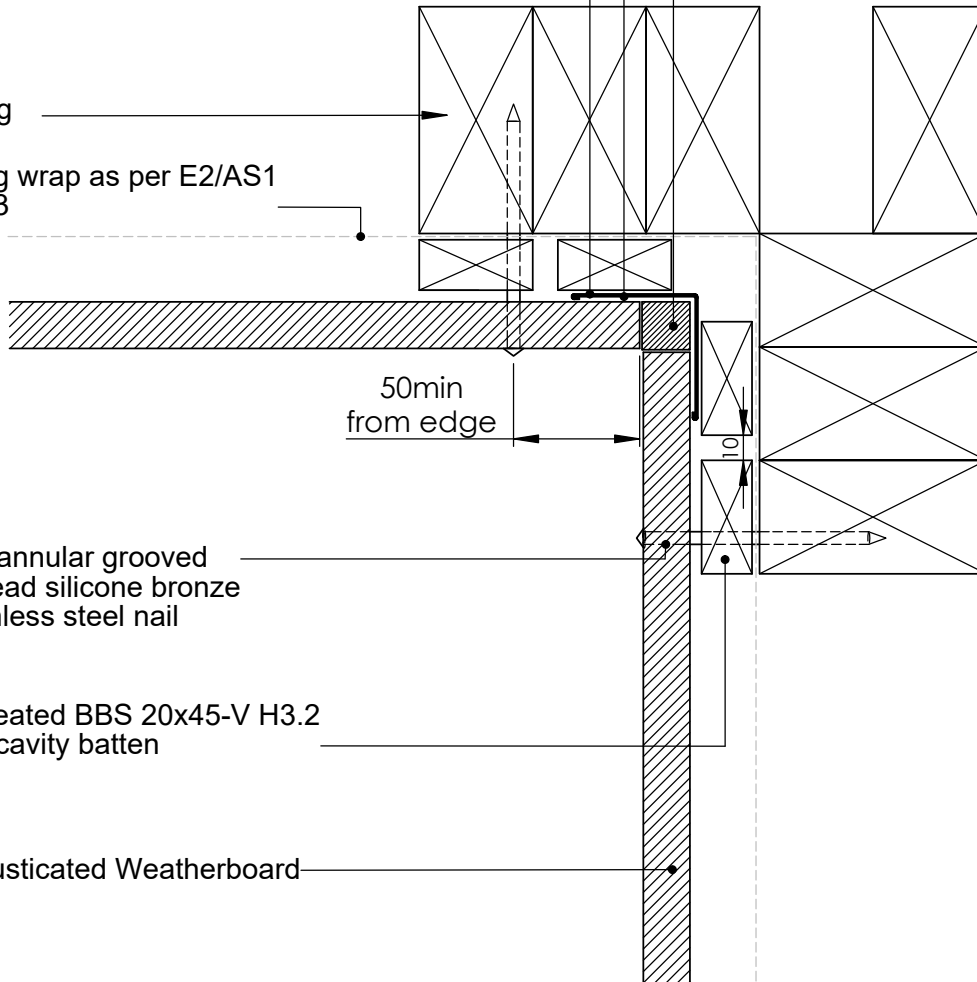
Building wrap as per E2/AS1
table 23

50min
from edge

75mm annular grooved
rose head silicone bronze
or stainless steel nail

CCA treated BBS 20x45-V H3.2
timber cavity batten

BBS Rusticated Weatherboard



TITLE:					copyright BBS Timbers LTD ©		Internal Corner Detail	
	NAME	SIGNATURE	DATE	Rev		27 Kioreroa road PO Box 1407 Whangarei 09 438 9358	DWG NO.	A4
DRAWN							RC-CW-02	
CHK'D								
APP'VD								
						SCALE:1:1	DNS	SHEET 1 OF 1