

Notes:

- All nail fixings pre-drilled minimum 1mm diameter smaller than nail gauge
- All products to be pre-coated & cut edges to be sealed as per Branz Bulletin 411
- All materials and fixtures are to comply with E2/AS1 clause 2.2
- Provide PVC tape bond break between H3.2 battens and any flashing
- Vertical Shiplap profiles to be fixed with a minimum 2mm gap at the overlap between boards
- Rigid & Flexible underlay as per table 23 and clauses 9.1.5 to 9.1.7
- Timber to NZBC B2 durability B2.3.1 (b), Western Red Cedar, Larch

80mm PBS Butyl tape lapped
evenly to corner over a 100mm
strip PBS Butyl primer

Internal corner "W" mould extrusion
50x20x20x50mm hem edge folds
compatibility to comply with NZBC E2/AS1

CCA treated H3.2 45x20mm
BBS "V" timber cavity batten

Framing

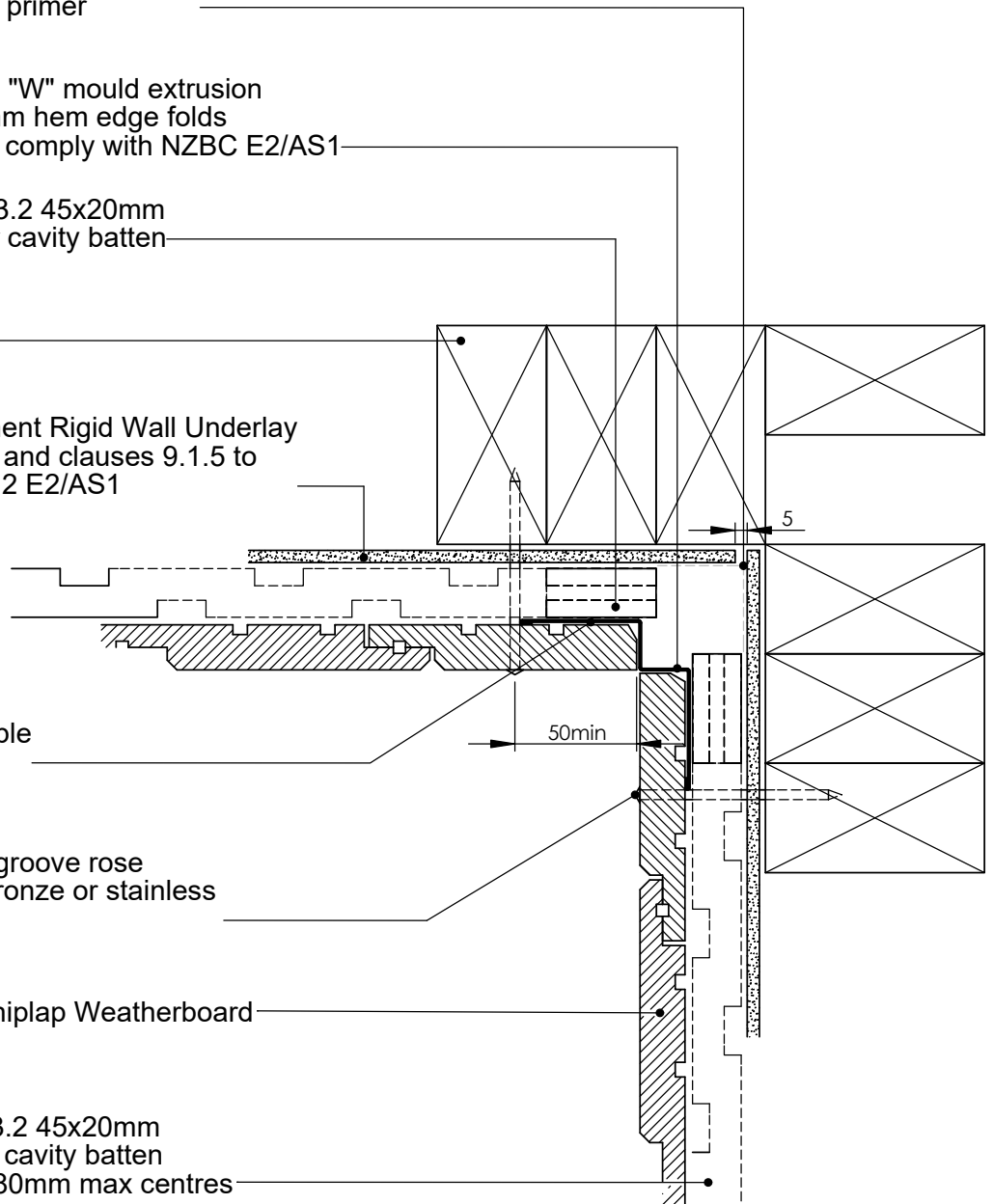
6mm Fibre cement Rigid Wall Underlay
As per table 23 and clauses 9.1.5 to
9.1.7 and 9.1.7.2 E2/AS1


9x9 Compressible
foam strip

75mm annular groove rose
head silicone bronze or stainless
steel nail

BBS Vertical Shiplap Weatherboard

CCA treated H3.2 45x20mm
BBS "H" timber cavity batten
Horizontal @ 480mm max centres



TITLE:					copyright BBS Timbers LTD ©		Internal Corner Detail		
	NAME	SIGNATURE	DATE	Rev		27 Kioreroa road PO Box 1407 Whangarei 09 438 9358	DWG NO.		A4
DRAWN							VC-RB-01		
CHK'D							SCALE:1:10 DNS		
APPV'D							SHEET 1 OF 1		