

**Notes:**

- All nail fixings pre-drilled minimum 1mm diameter smaller than nail gauge
- All products to be pre-coated & cut edges to be sealed as per Branz Bulletin 411
- All materials and fixtures are to comply with E2/AS1 clause 2.2
- Provide PVC tape bond break between H3.2 battens and any flashing
- Vertical Shiplap profiles to be fixed with a minimum 2mm gap at the overlap between boards
- Rigid & Flexible underlay as per table 23 and clauses 9.1.5 to 9.1.7
- Timber to NZBC B2 durability B2.3.1 (b), Western Red Cedar, Larch

80mm PBS Butyl tape lapped  
evenly to corner over a 100mm  
strip PBS Butyl primer

CCA treated H3.2 45x20mm  
BBS "V" timber cavity batten

9x9 compressible foam strip

Minimum 50x50mm internal flashing hem  
edge folds compatibility to comply with  
NZBC E2/AS1

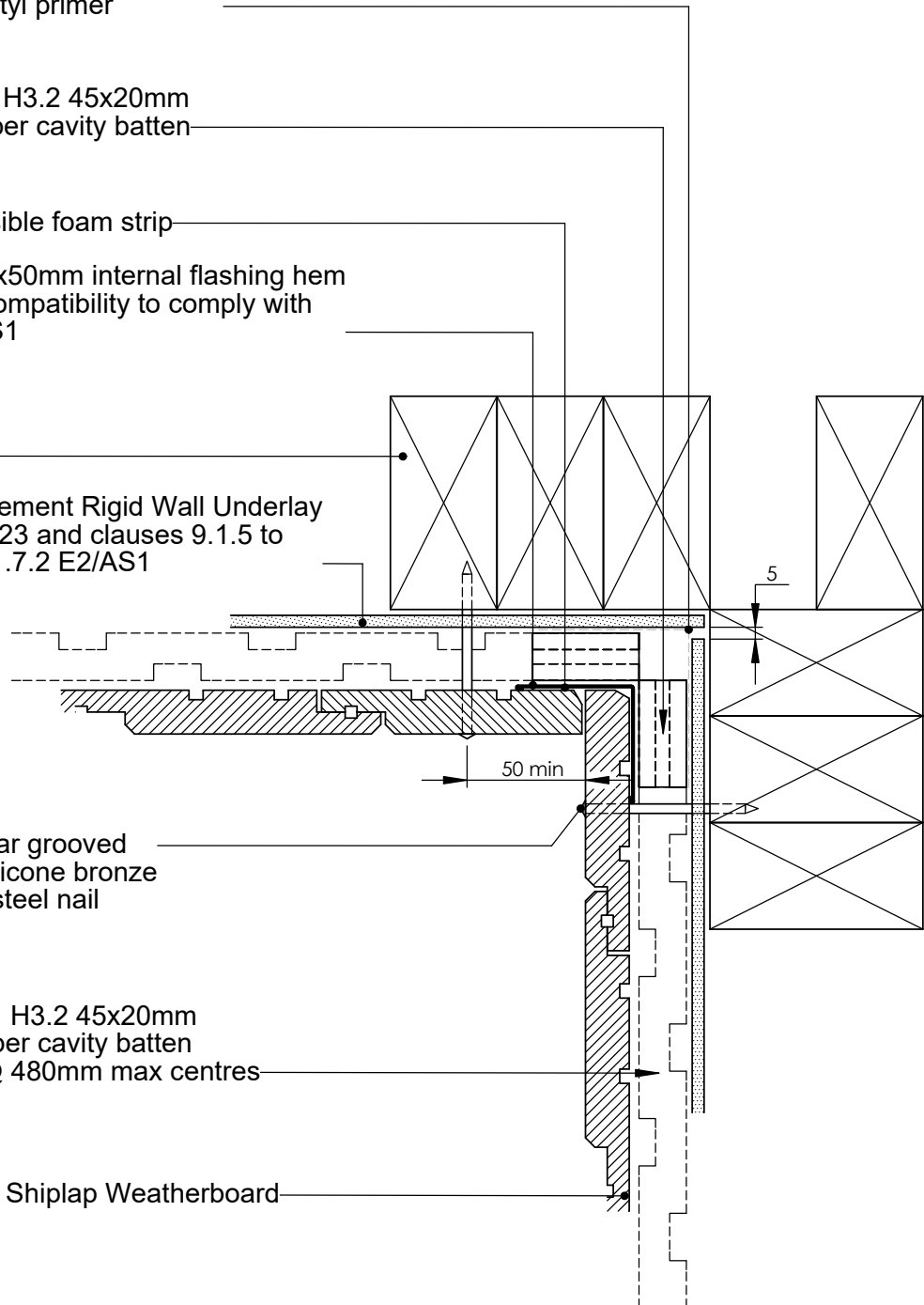
Framing

6mm Fibre cement Rigid Wall Underlay  
As per table 23 and clauses 9.1.5 to  
9.1.7 and 9.1.7.2 E2/AS1

75mm annular grooved  
rose head silicone bronze  
or stainless steel nail

CCA treated H3.2 45x20mm  
BBS "H" timber cavity batten  
Horizontal @ 480mm max centres

BBS Vertical Shiplap Weatherboard



TITLE:					copyright BBS Timbers LTD ©		Internal Corner Detail		
	NAME	SIGNATURE	DATE	Rev		27 Kioreroa road PO Box 1407 Whangarei 09 438 9358	DWG NO.		A4
DRAWN							VC-RB-19		
CHK'D							SCALE:1:1 DNS		
APPV'D							SHEET 1 OF 1		