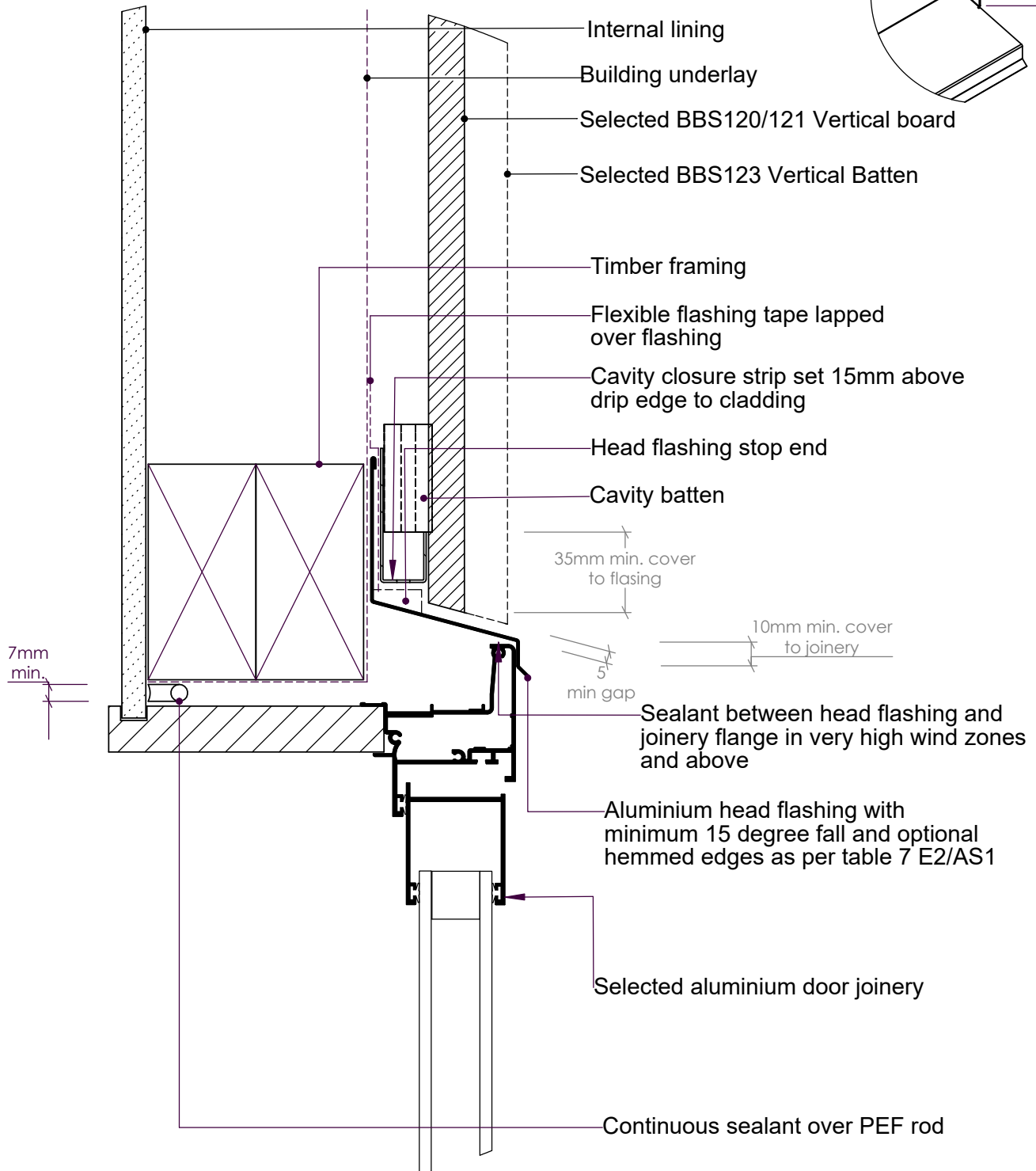
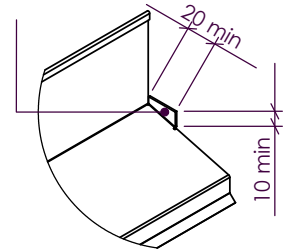


Notes:

- All nail fixings pre-drilled minimum 1mm diameter smaller than the nail gauge.
- All BBS Timber products to be pre-coated & cut ends and edges and all fresh cut surfaces double coated and sealed before fixing.
- All Materials and fixtures are to comply with E2/AS1 Clause 2.2.
- For non-hemmed corner flashings, ensure a minimum of 75mm cover to weatherboards beyond the point where BRANZ bulletin 411 compliant Weatherboard lap or rebate combinations terminate at the corner junction. In Extra High Wind Zones and above, the 75mm cover requirements remains and hemmed edges must be used
- Refer to NZBC Acceptable Solutions E2/AS1 Table 2.1 for the separation requirements between CCA treated battens and metal flashings

Head flashing turned up to form stop



| | | | | | | | |
|-----------------------------|------|-----------|------|-----|------------------|--------------|----|
| copyright BBS Timbers LTD © | | | | | Door Head Detail | | |
| DRAWN | NAME | SIGNATURE | DATE | Rev | DWG NO. | BB-CW-04 | A4 |
| CHK'D | | | | | | | |
| APPV'D | | | | | SCALE:1:10 DNS | SHEET 1 OF 1 | |



27 Kioreroa road
PO Box 1407
Whangarei
09 438 9358