



Hexa - Plywood

Hexa - is a plywood panel coated with black film and imprinted with a hexagonal pattern. It is intended for use as flooring in the transport industry, i.e. delivery vans and horseboxes and building applications such as warehouses and stage platforms. Hexa is the best choice when slip resistant or decorative flooring is needed.

Description

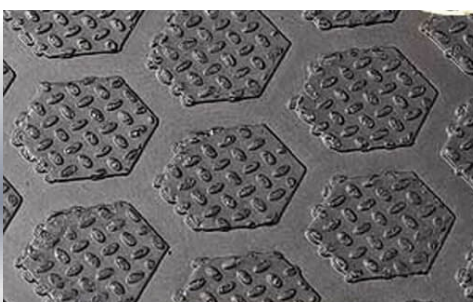
- 100% birch plywood coated with film imprinted with hexagonal pattern
- The glue type is - Class 1 (EN 314-2)
- The emission = E1 as per EN 717-2
- Class 3 Grade Exterior
- Physical and mechanical properties meet the requirements of EN 13986.

Applications / Uses

- Flooring for Transport & Containers, stair treads,
- Access ramps
- Speaker Boxes, Stages
- Shop fitting, Kitchens
- Vehicle decks, Scaffold systems
- Horse Floats
- Commercial Vehicle floors
- Sports and Play ground facilities



Sheet size 2440 x 1220	
Thickness	18mm
# Layers	13
Weight per sheet (Kg)	35



Head Office -

27 Kioreroa Road, Whangarei (09 4389358)
email : office@bbstimbers.co.nz

Auckland Branch -

82 Henderson Valley Road, Henderson, Auckland (09 8360124)

email : phil@bbstimbers.co.nz

Christchurch Branch -

14 Halwyn Drive, Hei Hei , Christchurch (03 3445591)
email : chch@bbstimbers.co.nz